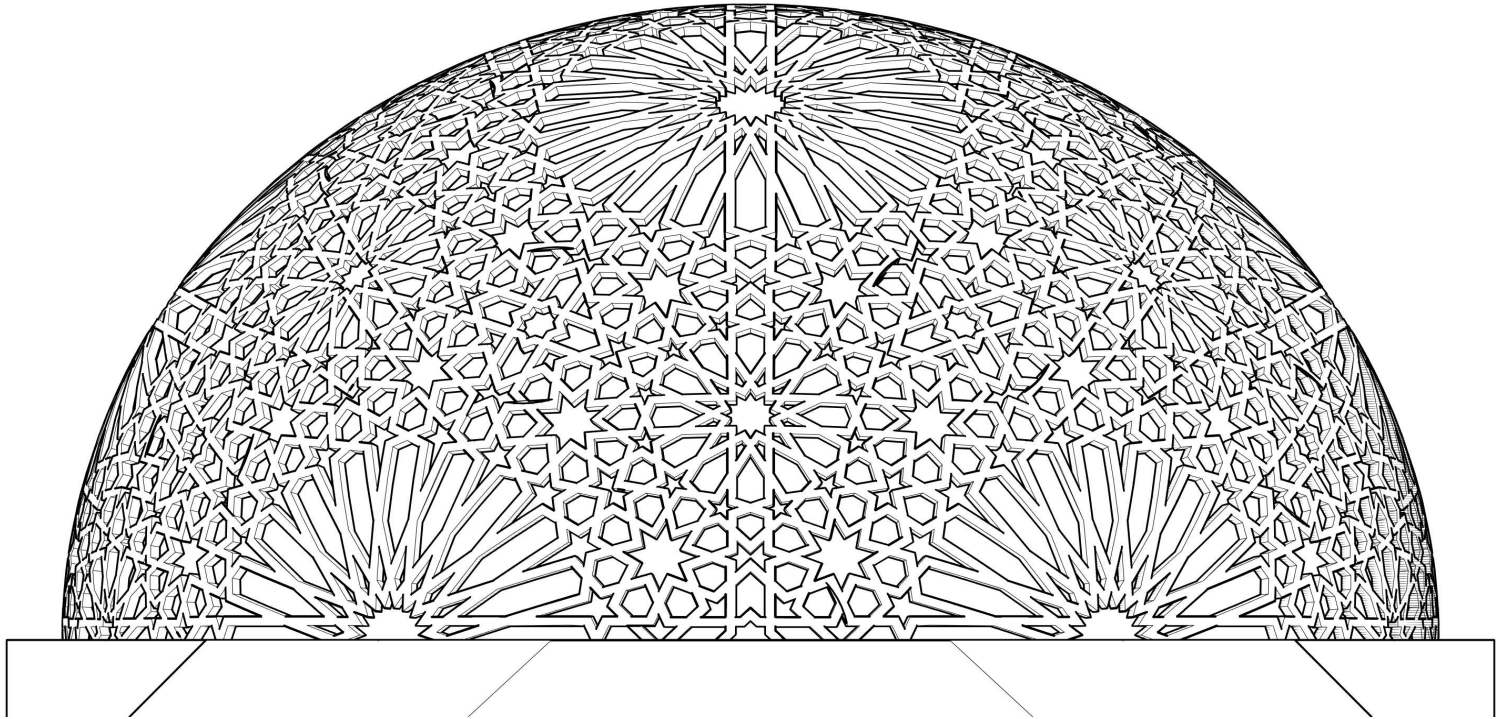
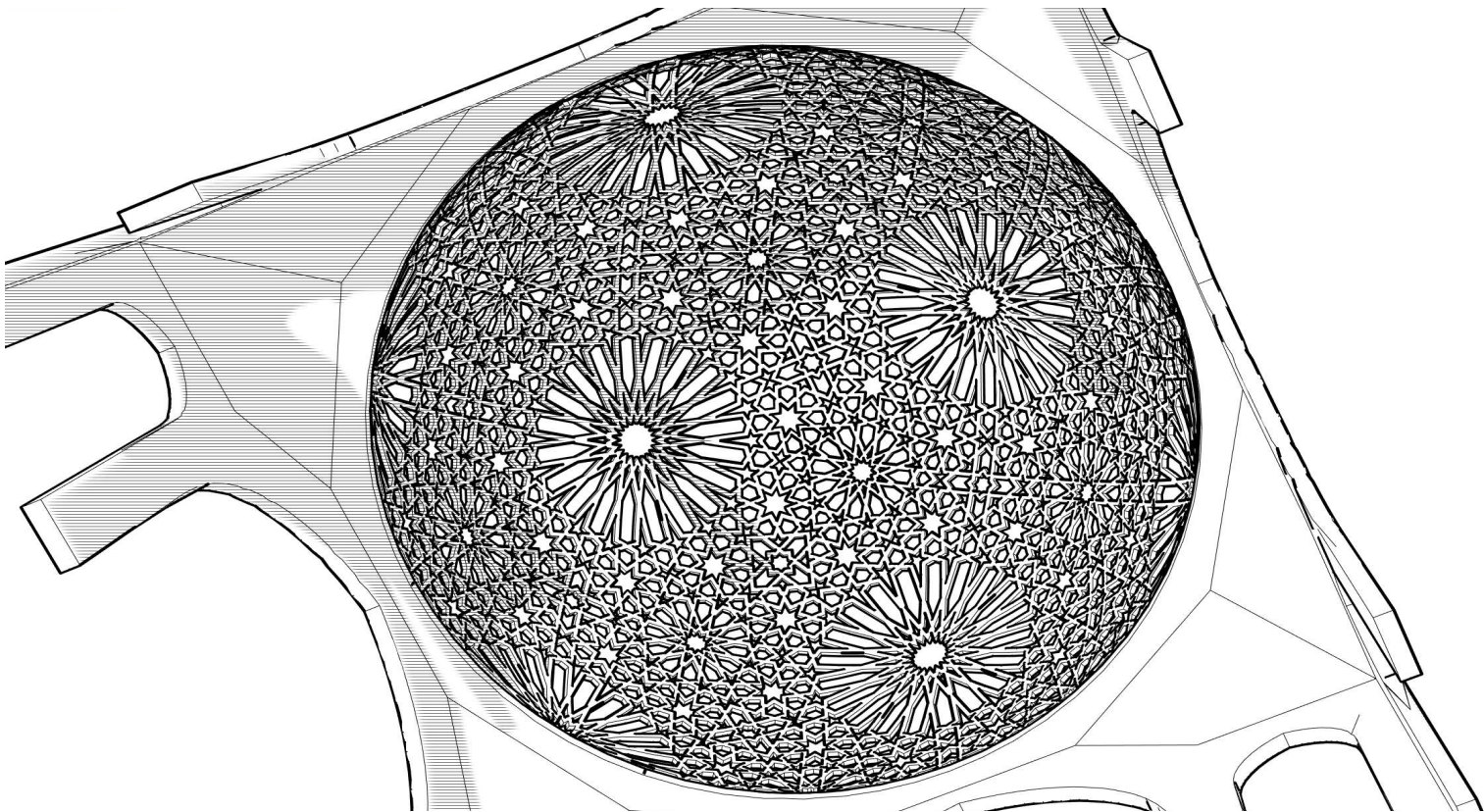


PLASMIC

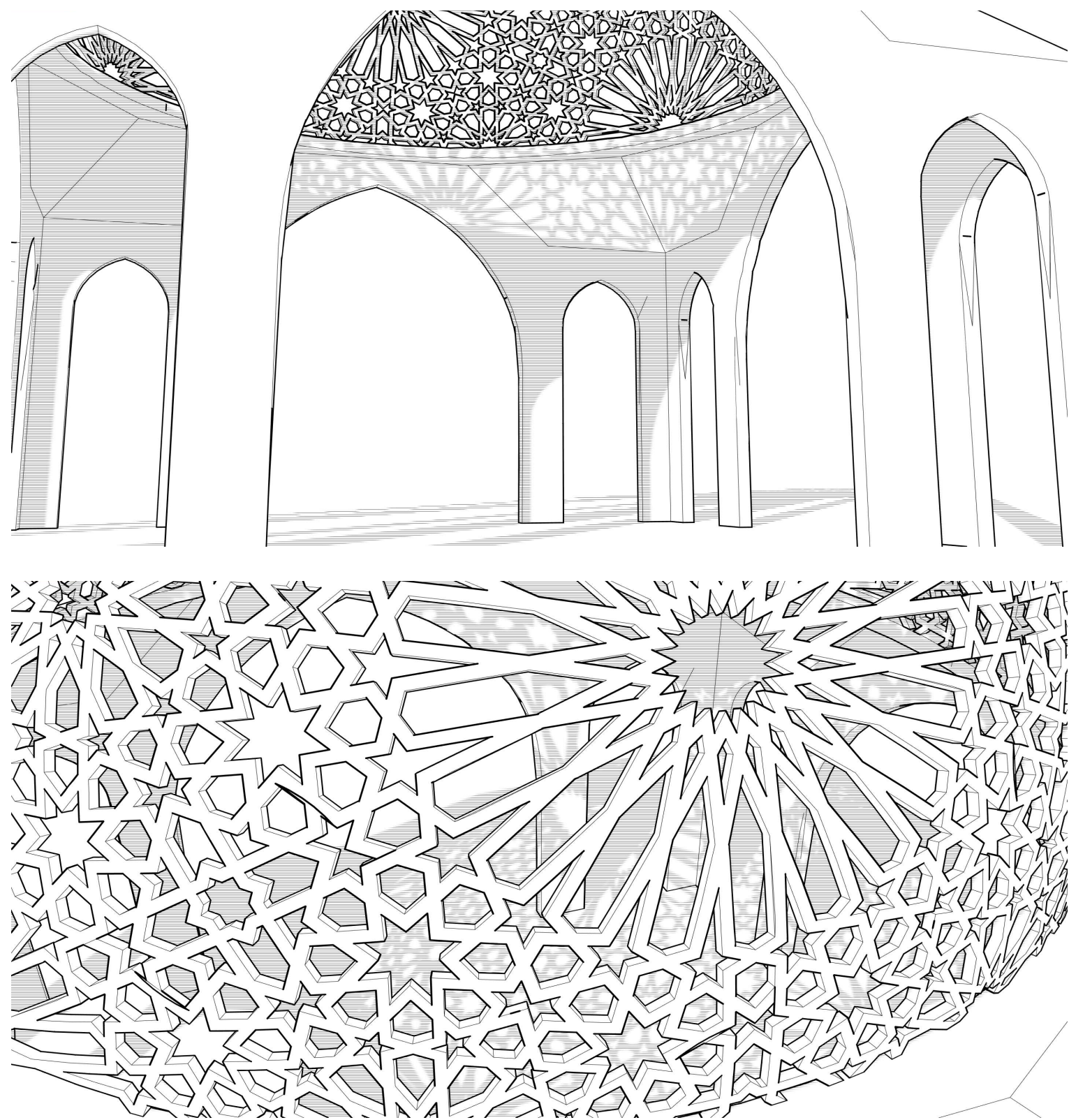
projects

PLASMIC ARCHITECTURE ° DESIGN °

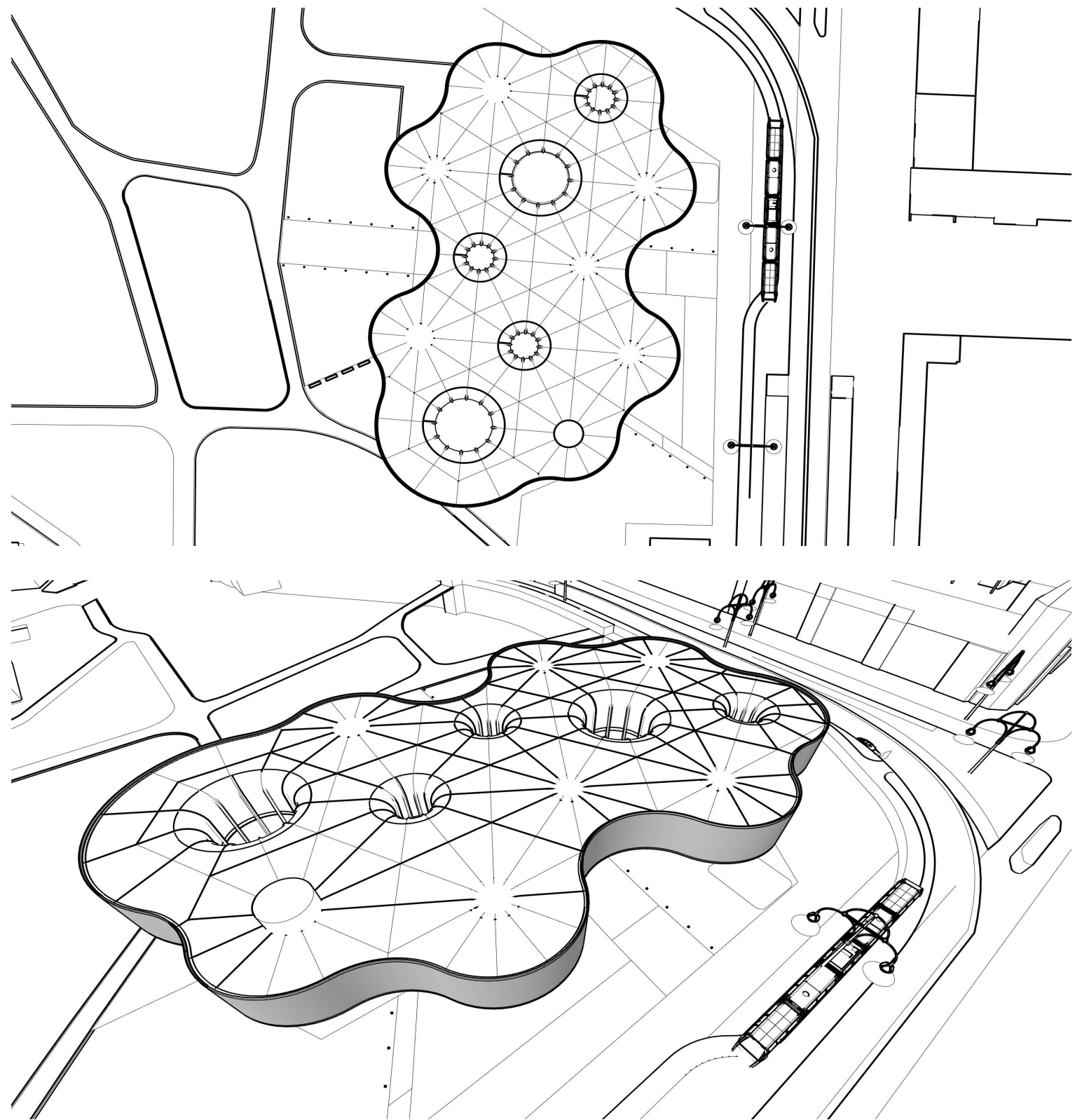
Islamic Design



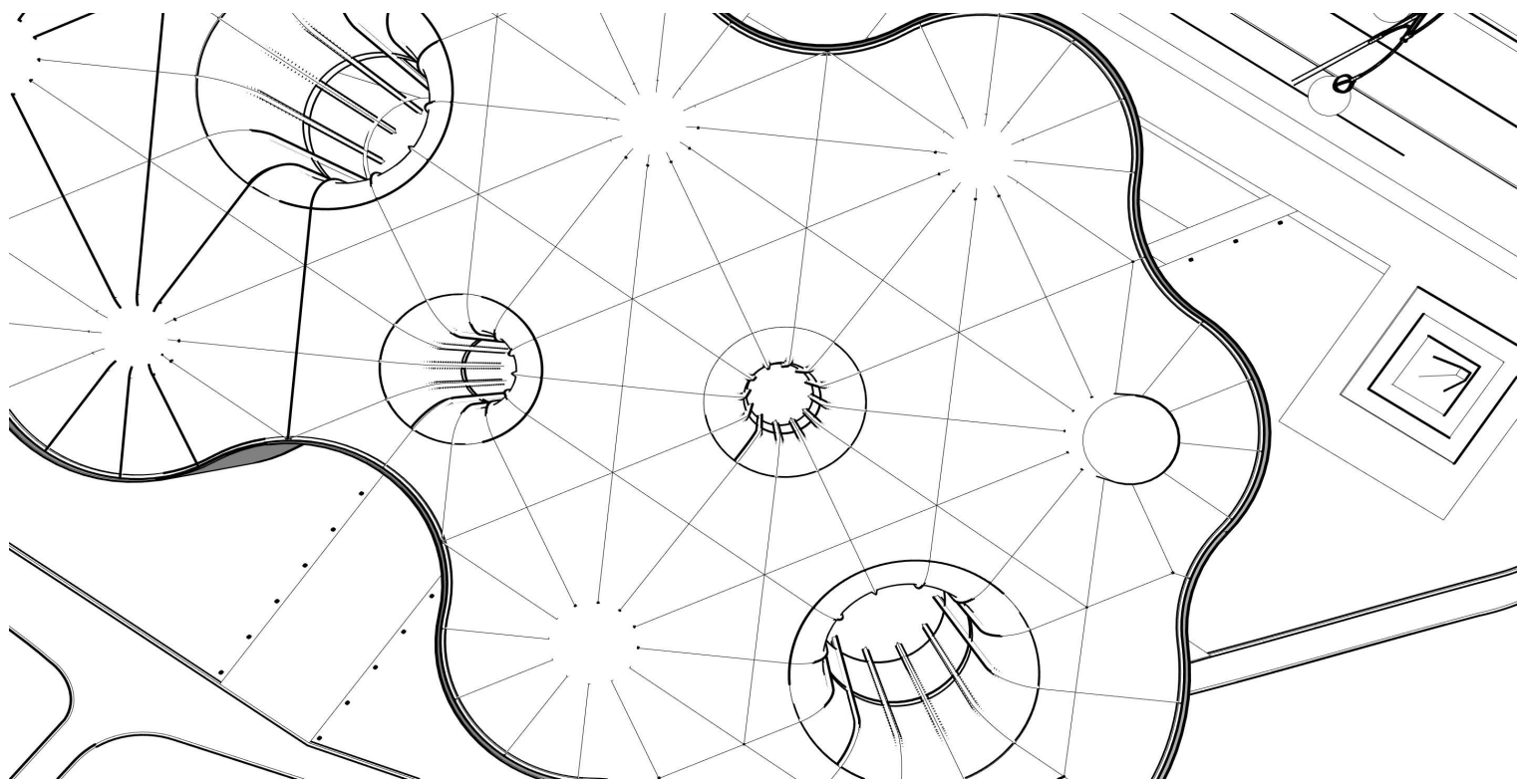
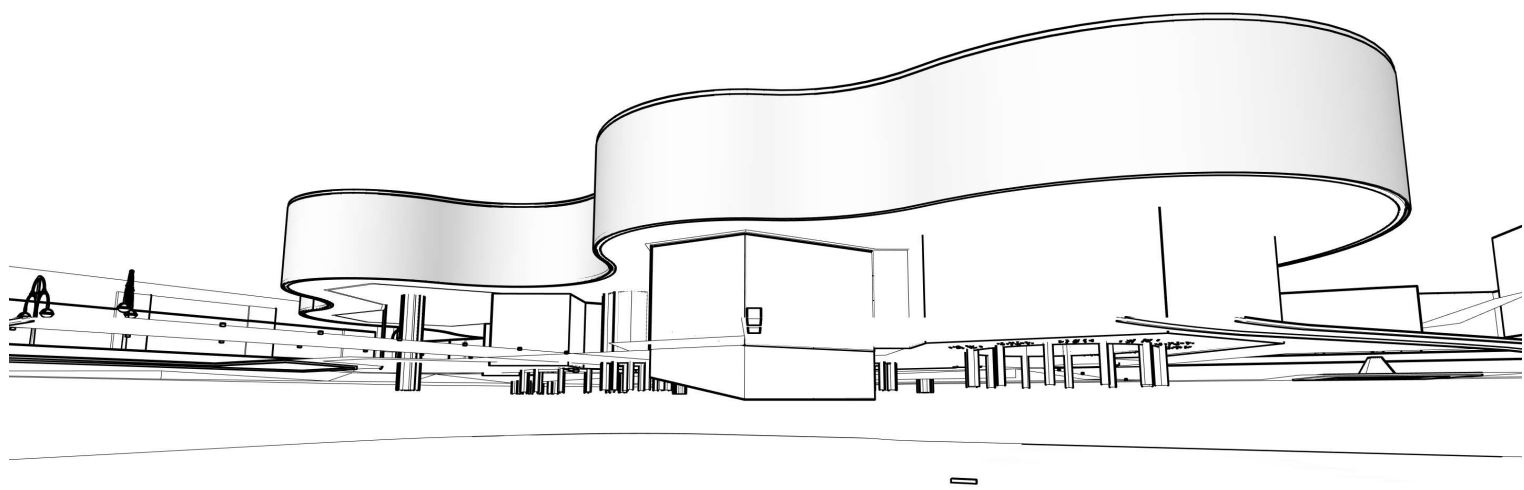
Islamic Design



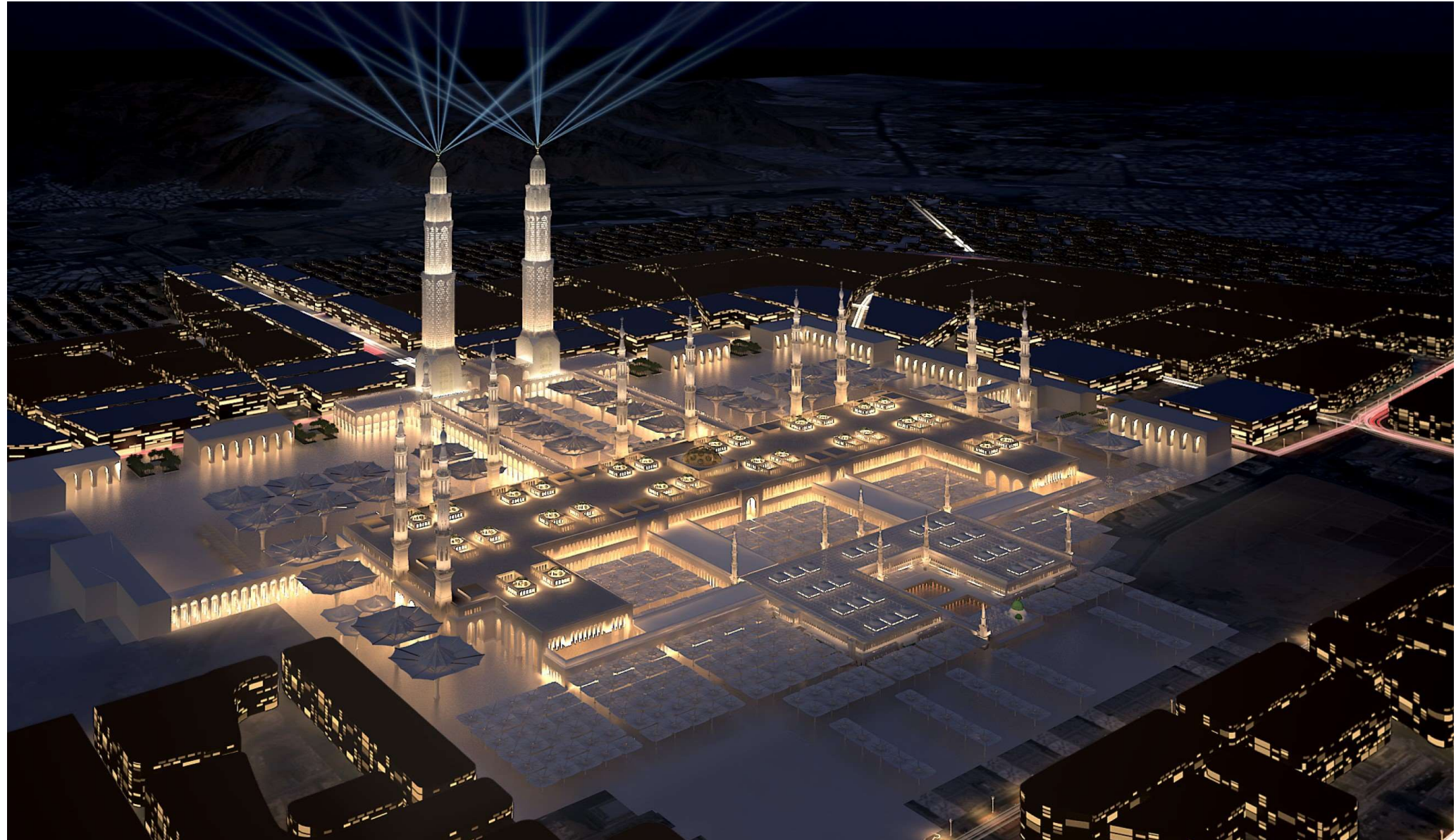
Competition
Bauhaus



Competition
Bauhaus

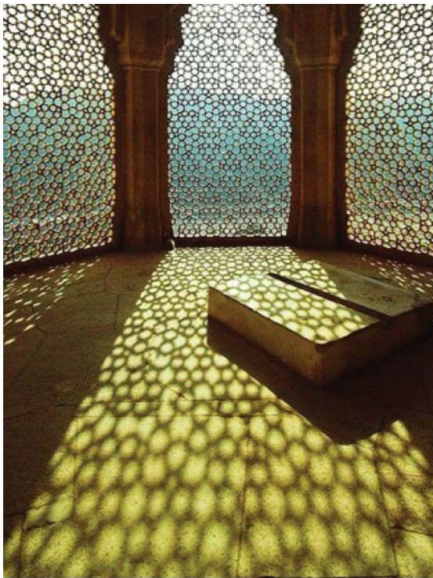


Proposal Madinah Gate

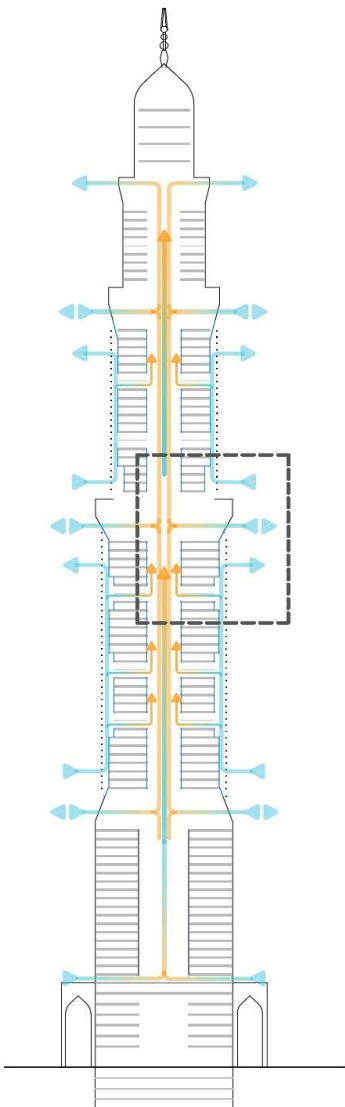


Proposal Madinah Gate

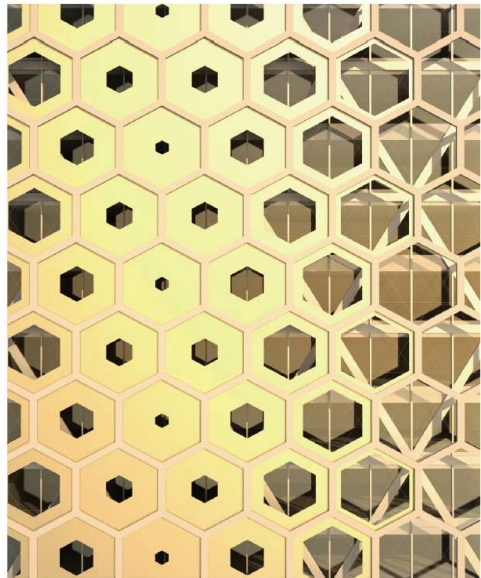
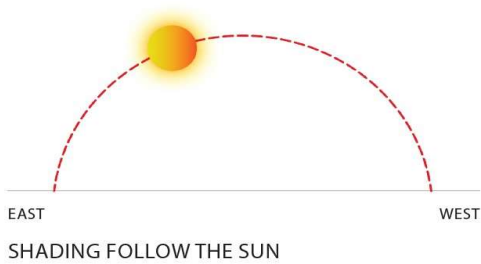
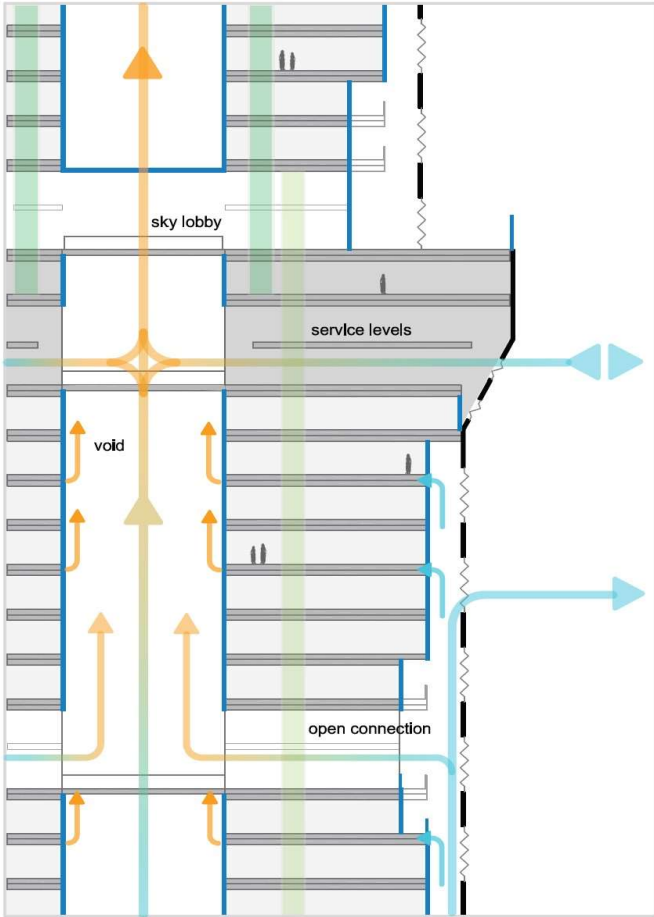
- DESIGN PRINCIPLE
- THE LOCAL MINARET DESIGN TO BE TRANSFERRED INTO SUPER SCALE OF A CONTEMPORARY SKYSCRAPER TO CONNECT BOTH – TRADITION AND LATEST TECHNOLOGIES
- STRUCTURE
- TUBE IN TUBE STRUCTURAL PRINCIPLE
 - MAJOR LOAD IS WIND LOAD, NOT VERTICAL LOAD – FAÇADE DESIGN AND GEOMETRY ARE OPTIMIZED FOR WIND LOAD REDUCTION
 - EMBEDDED HOLLOW CORE (VERTICAL VOID) TO FUNCTION (SERVE) AS AN ISLAMIC COURT YARD WITH: NATURAL LIGHT / PRIVACY / VENTILATION & COOLING
- FAÇADE
- THE MASHRABIYA AS A STRONG ELEMENT OF ISLAMIC DESIGN WILL CONNECT TRADITION WITH TODAY'S WORLD
 - A "HIGHTECH MASHRABIYA" TO BE DESIGNED AS DOUBLE FAÇADE HOSTING FUNCTIONS AS FOLLOWS:
TRADITIONAL REFERENCE / SHADING /
WIND PROTECTION / VENTILATION & COOLING / PRIVACY



MASHRABIYA IN OMAN

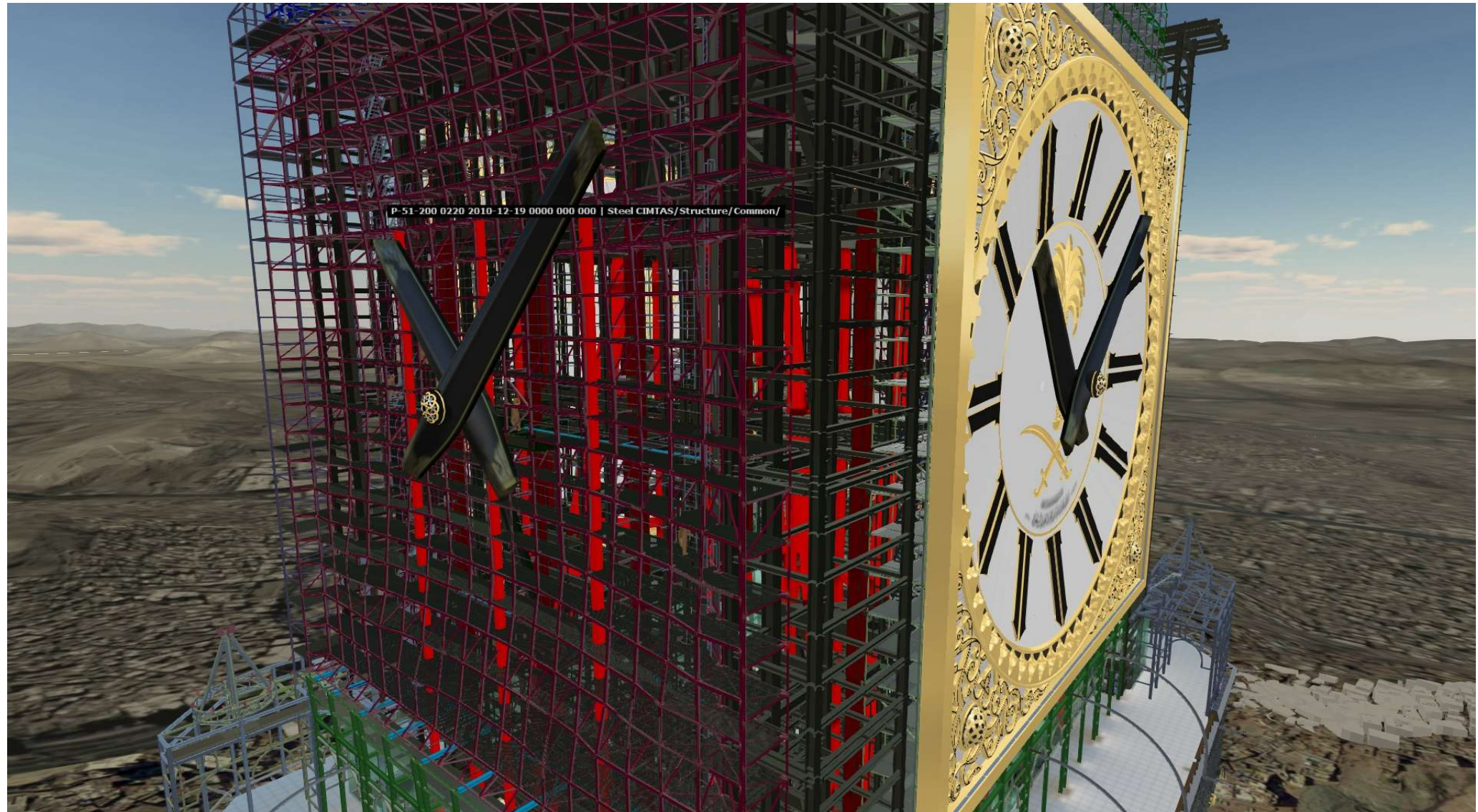


VENTILATION SCHEME

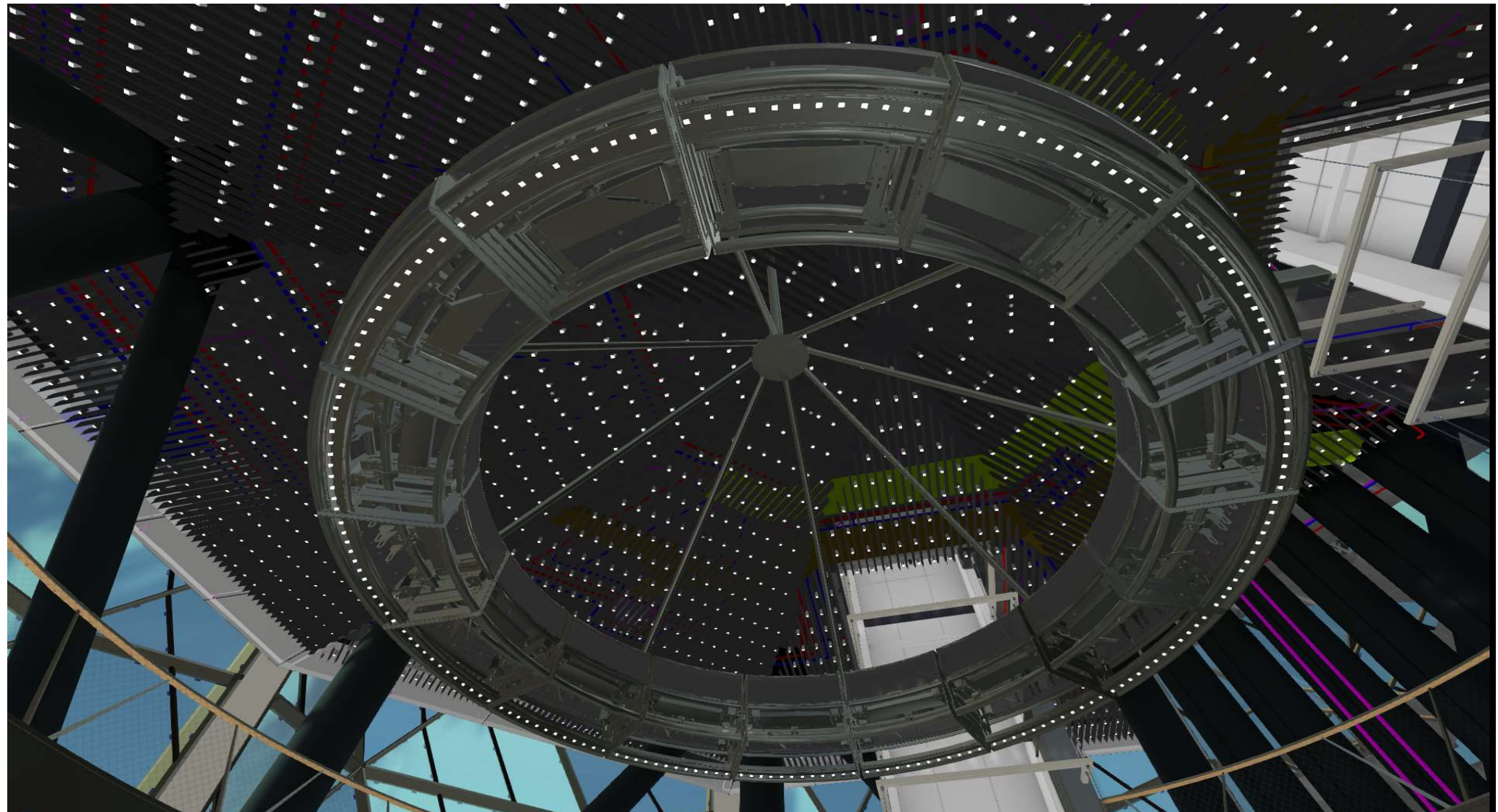


CLOSE UP FACADE

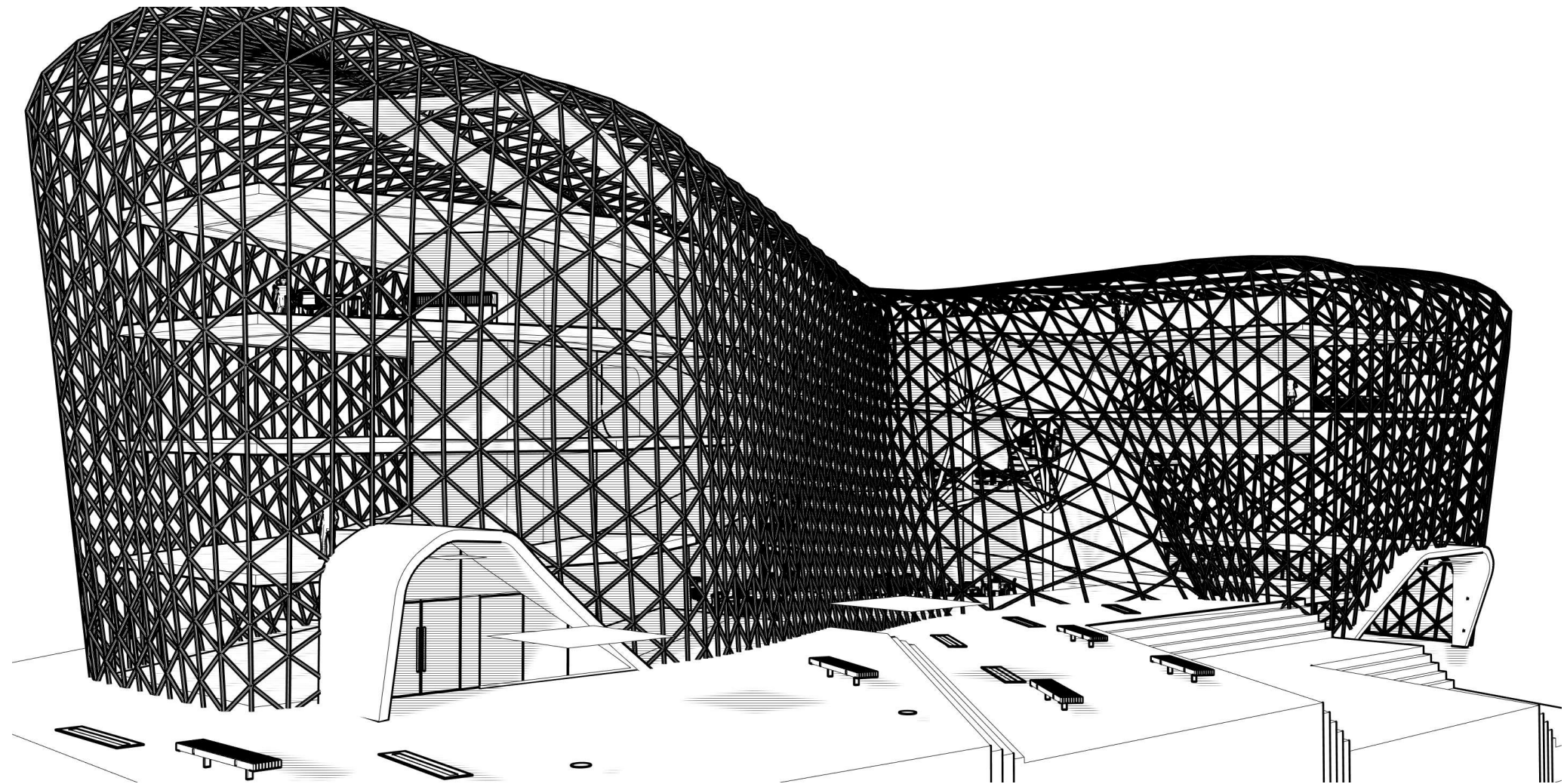
Makkah Clocktower Design



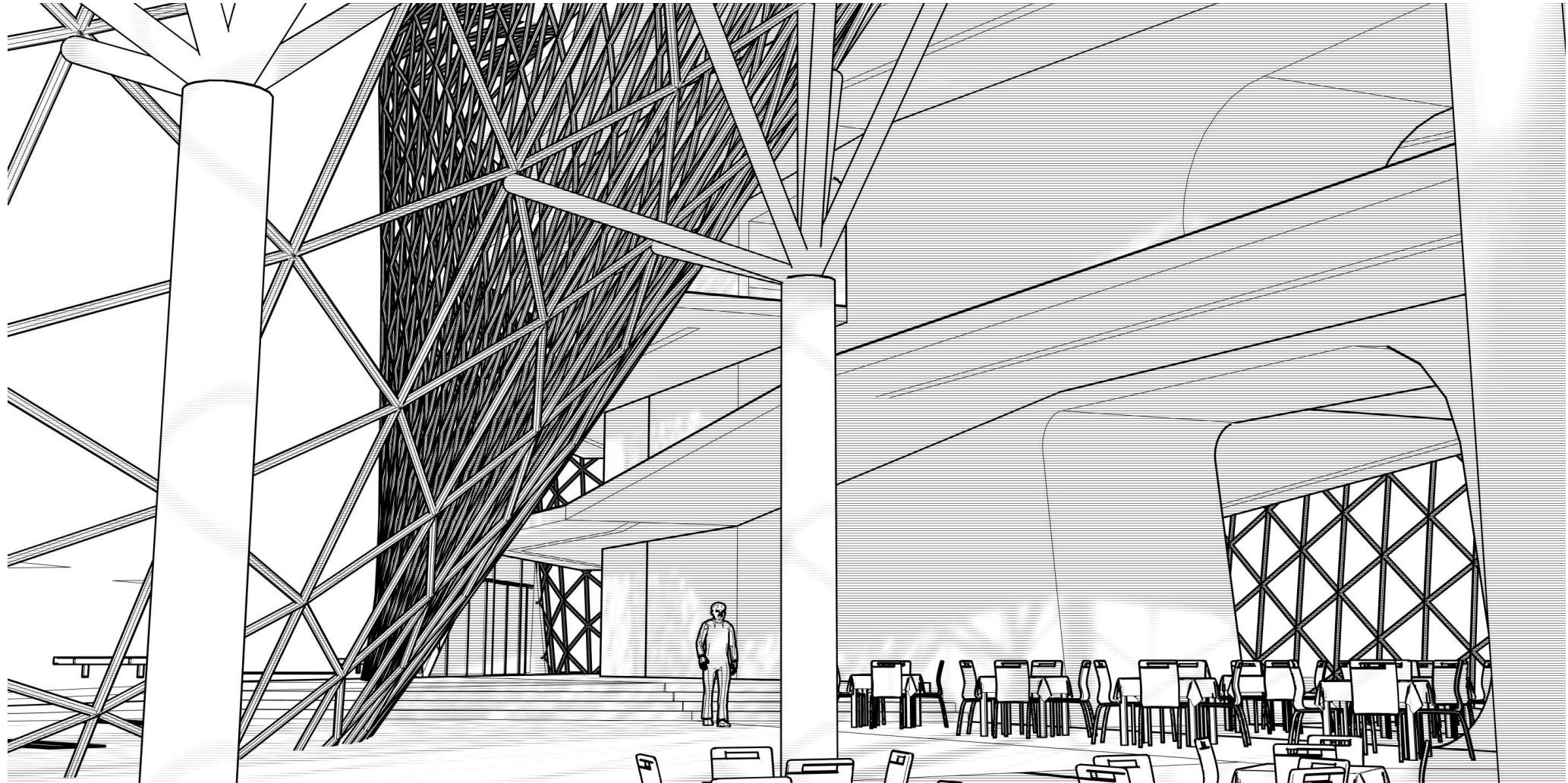
Makkah Clocktower Design



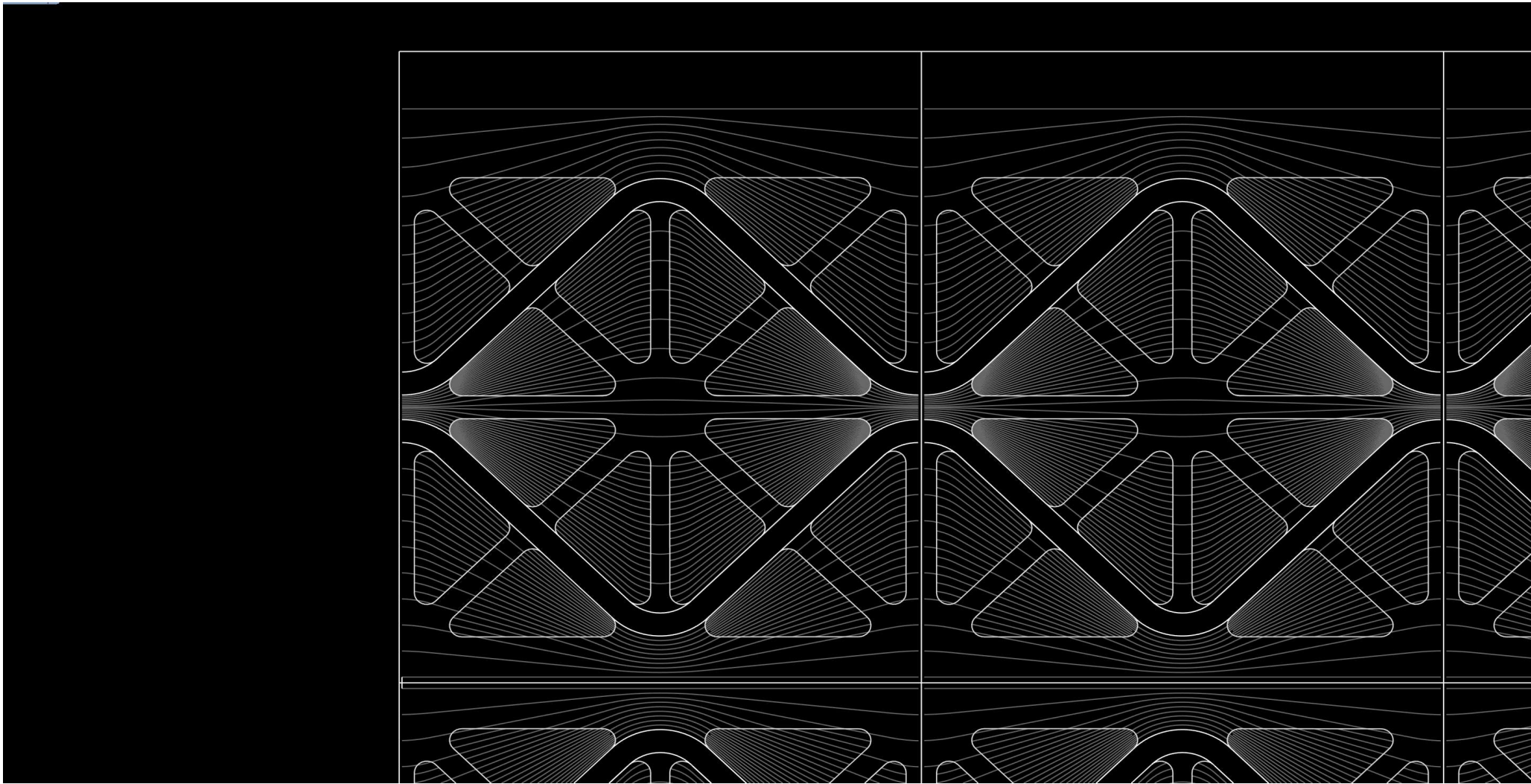
Office Building Design



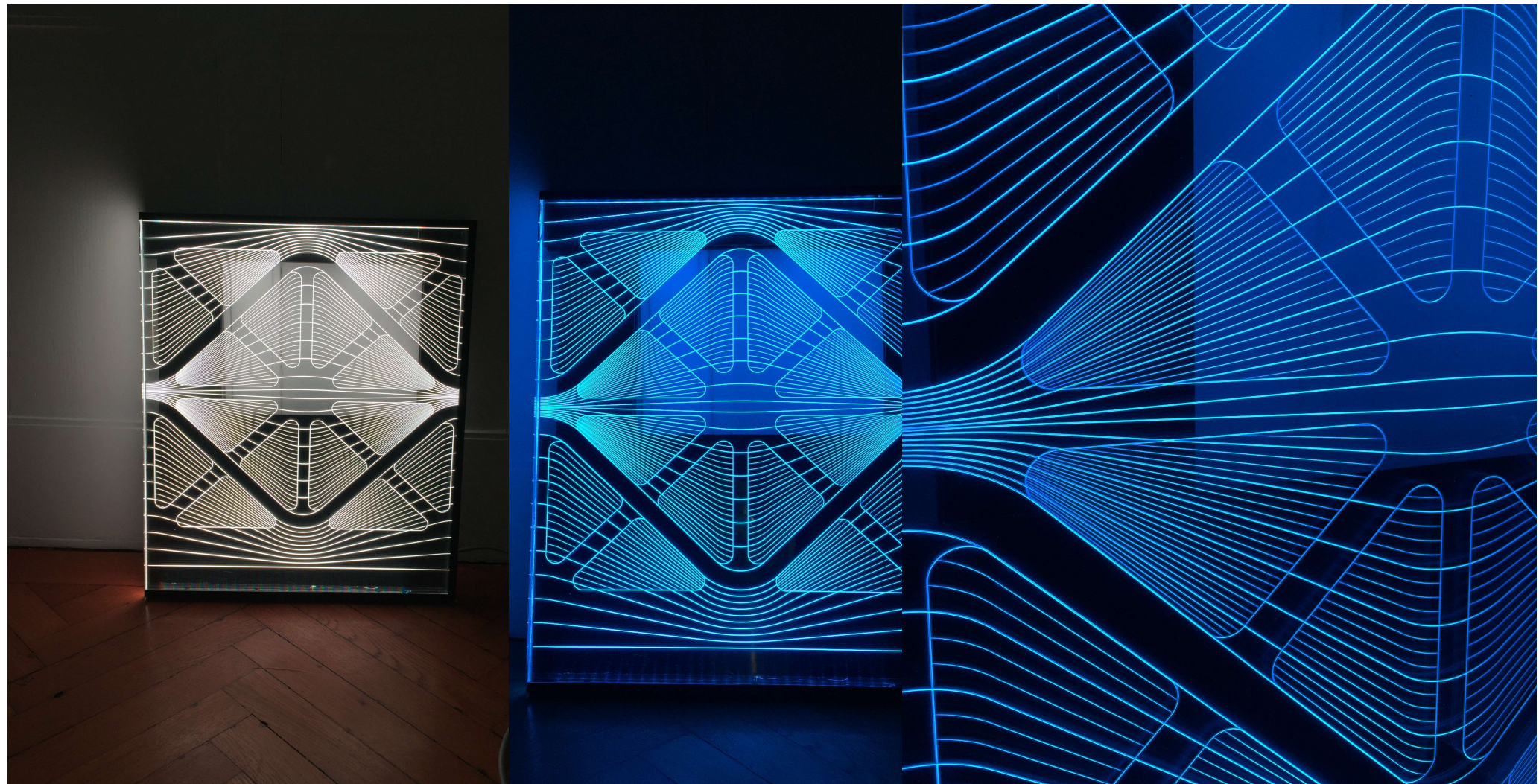
Office Building Design



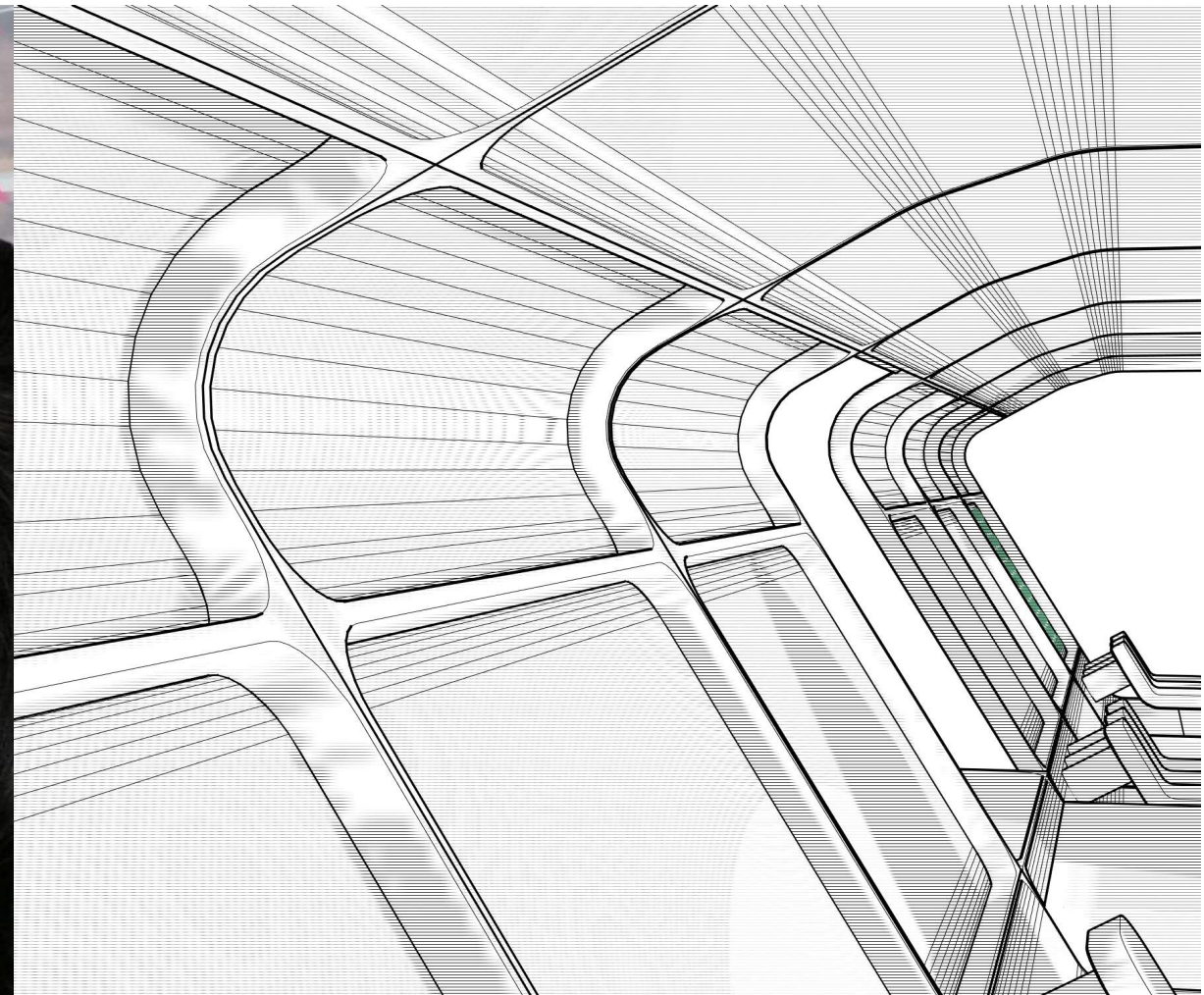
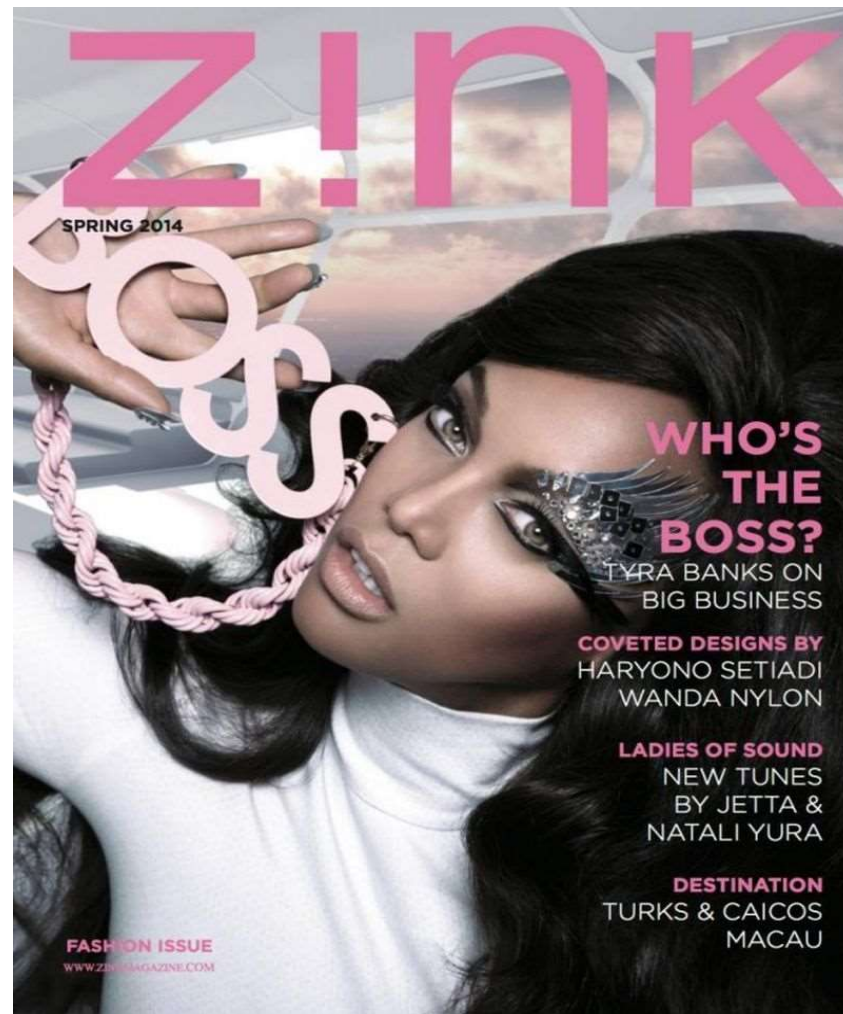
Interior Design



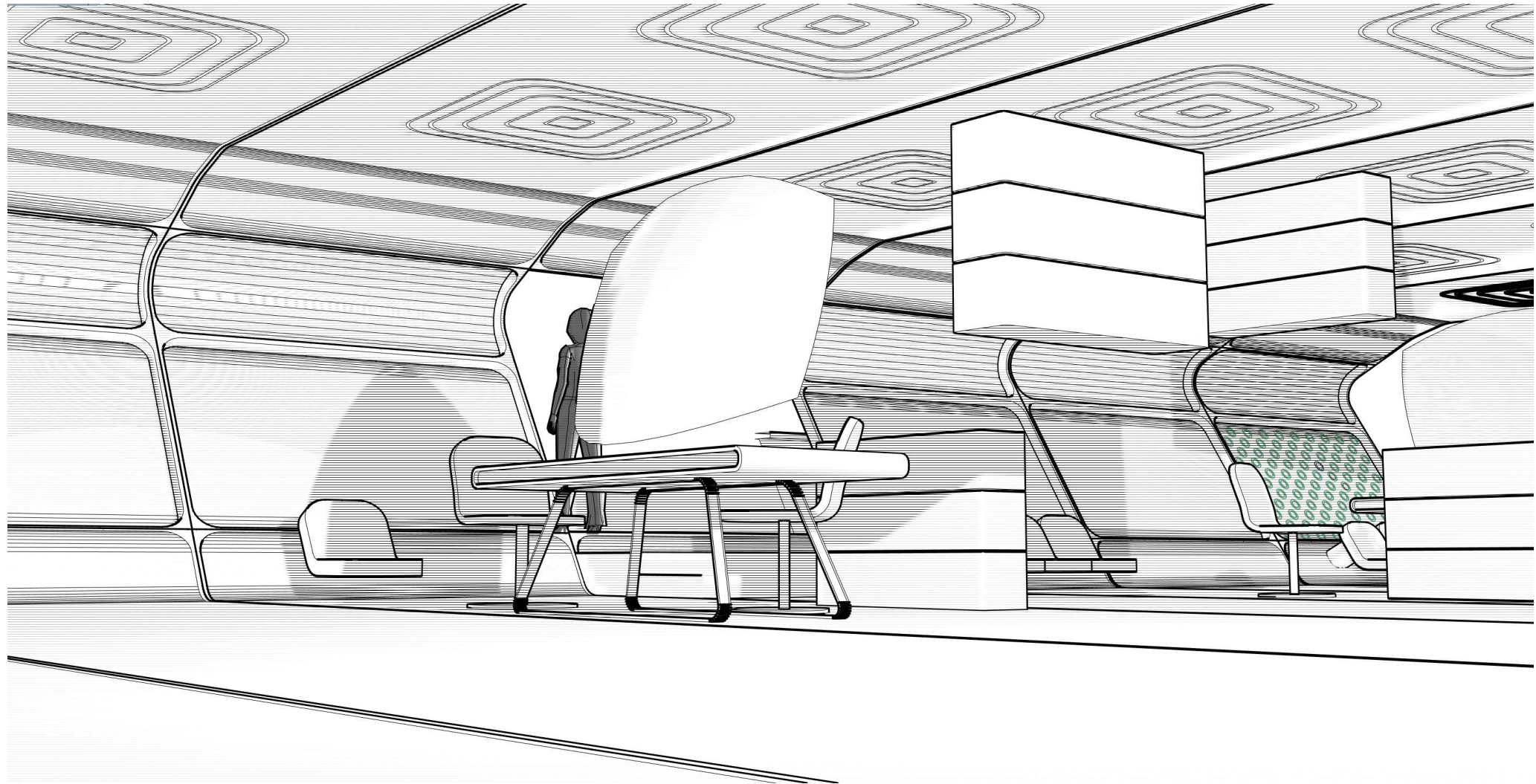
Interior Design



Interior Design



Interior Design



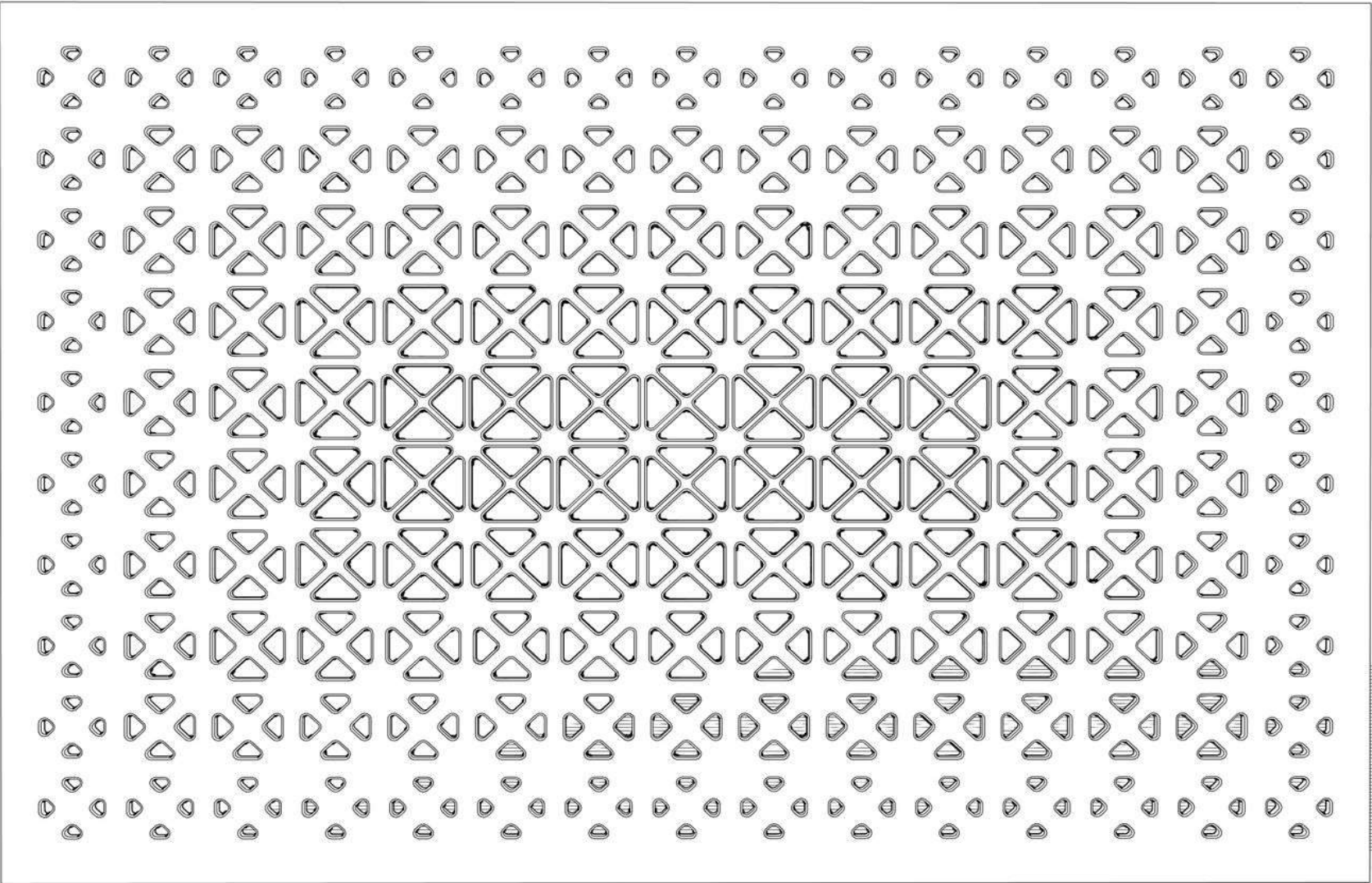
Interior Design



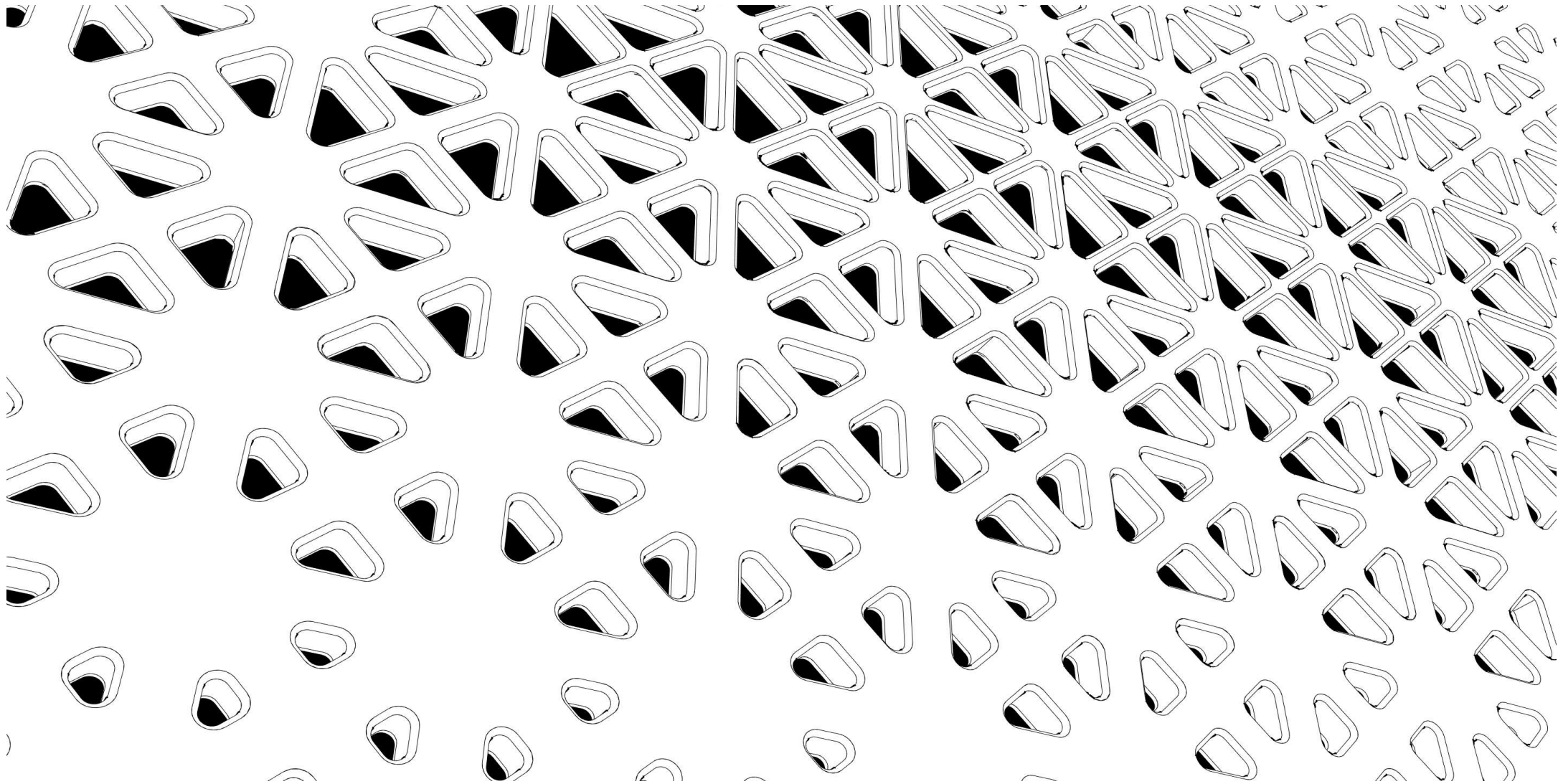
Interior Design



Interior Design



Interior Design



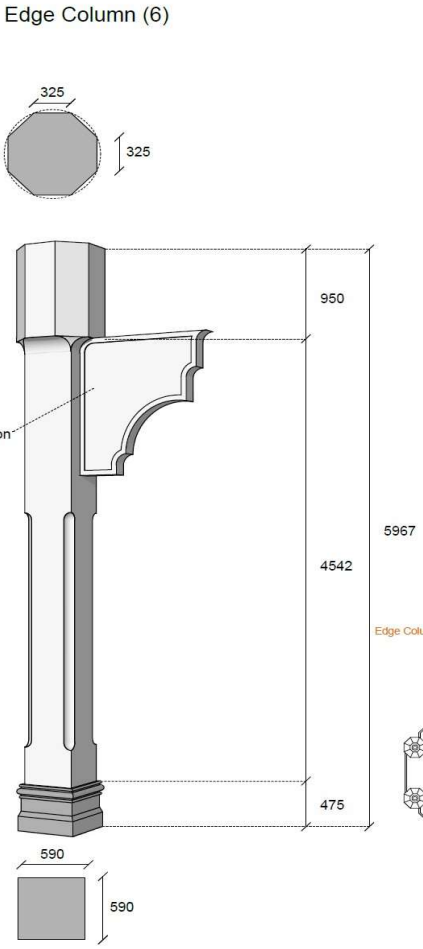
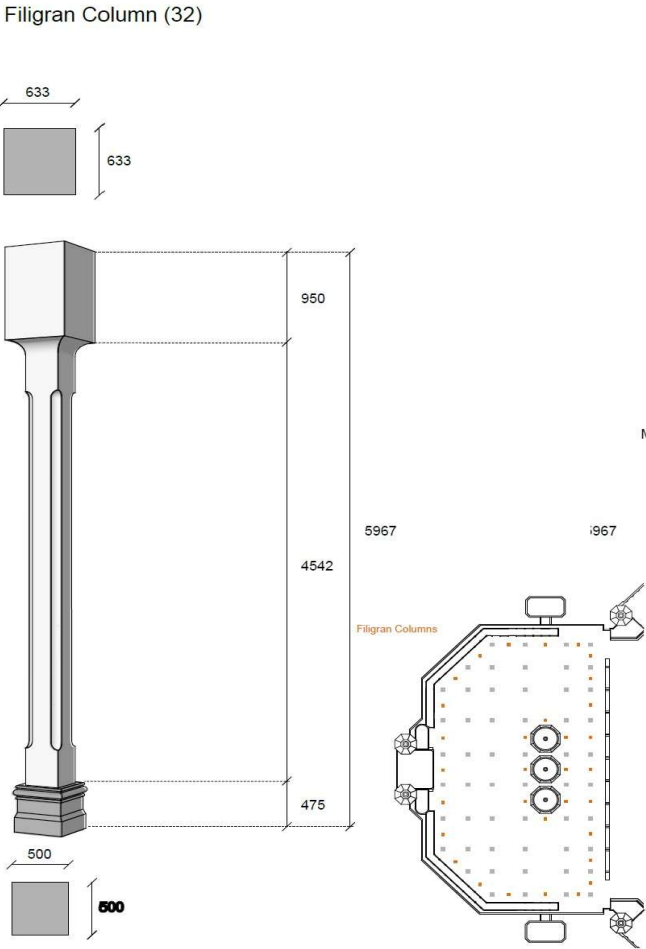
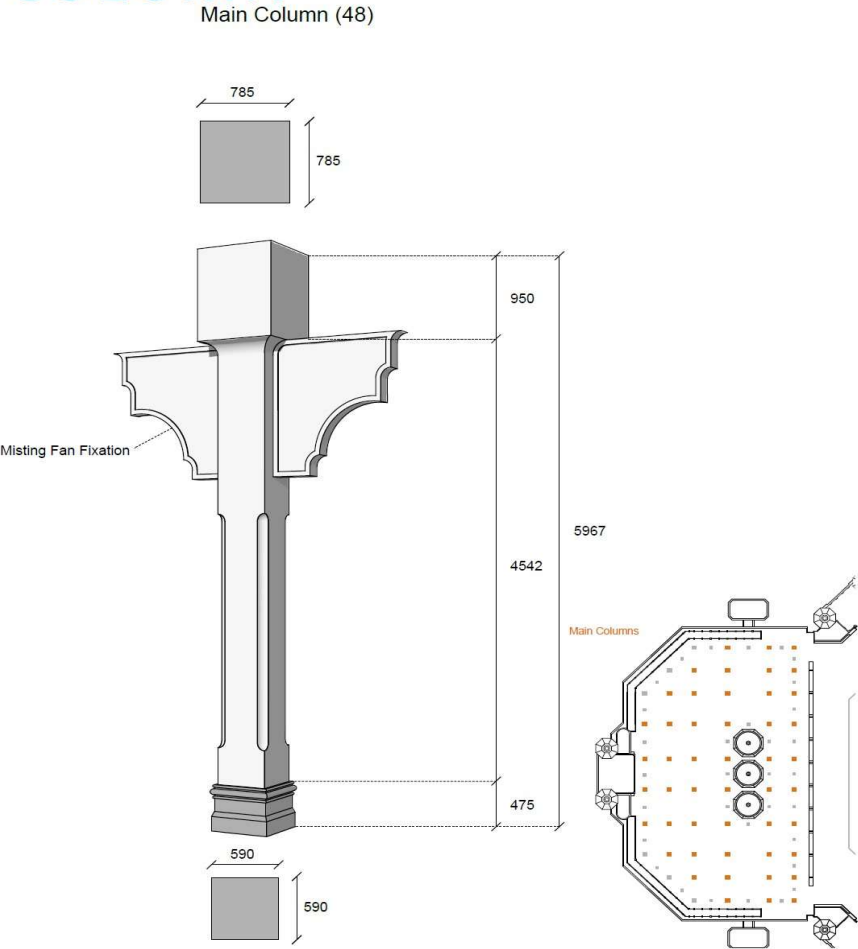
Shading
Structure
Design

VERSIONS 1 - 4

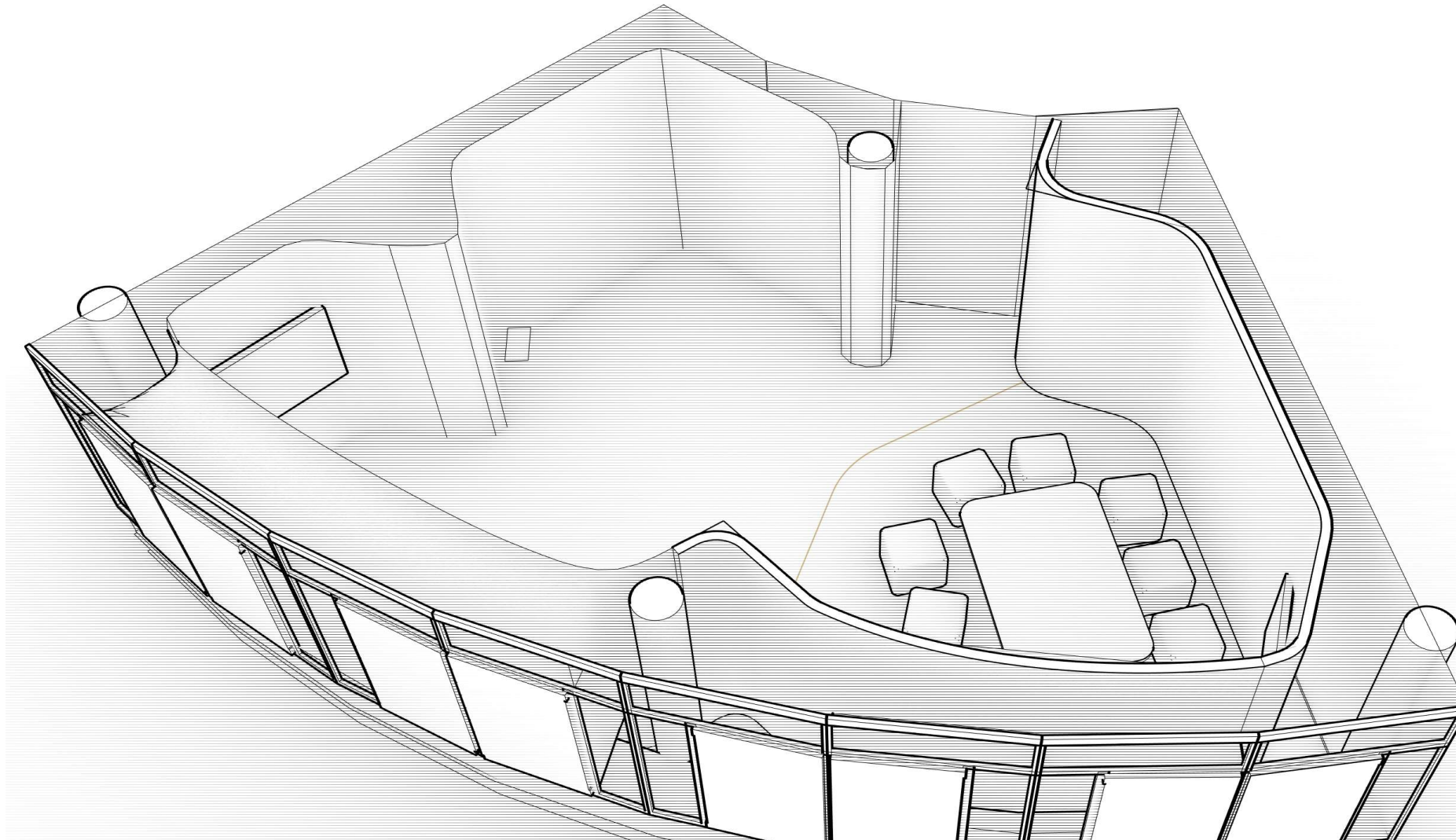


Shading Structure Design

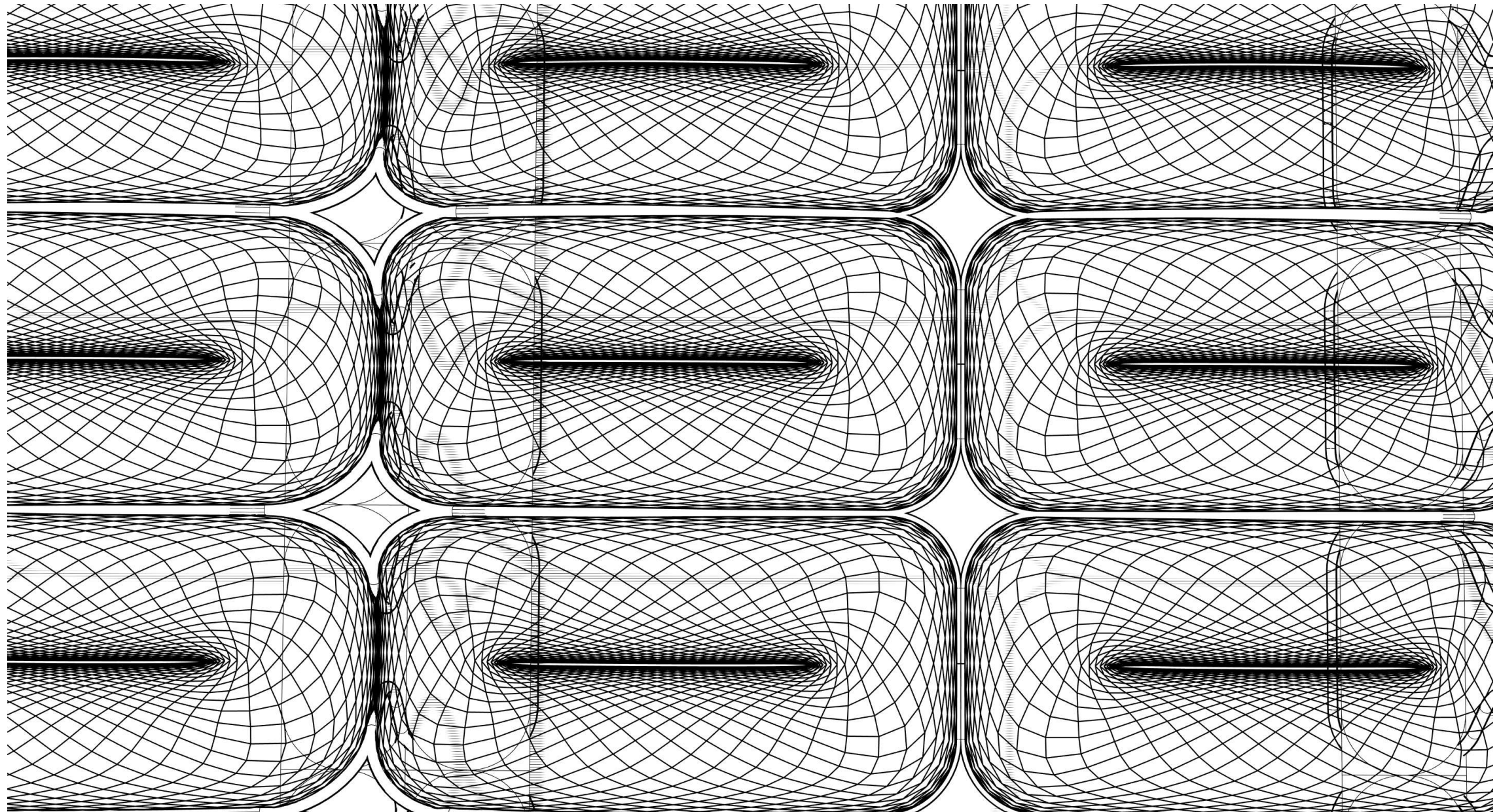
COLUMN



Creativity Room Design



Network Partners



<https://transsolar.com/>

<https://www.designtoproduction.com/>

<http://www.pct.ae/>

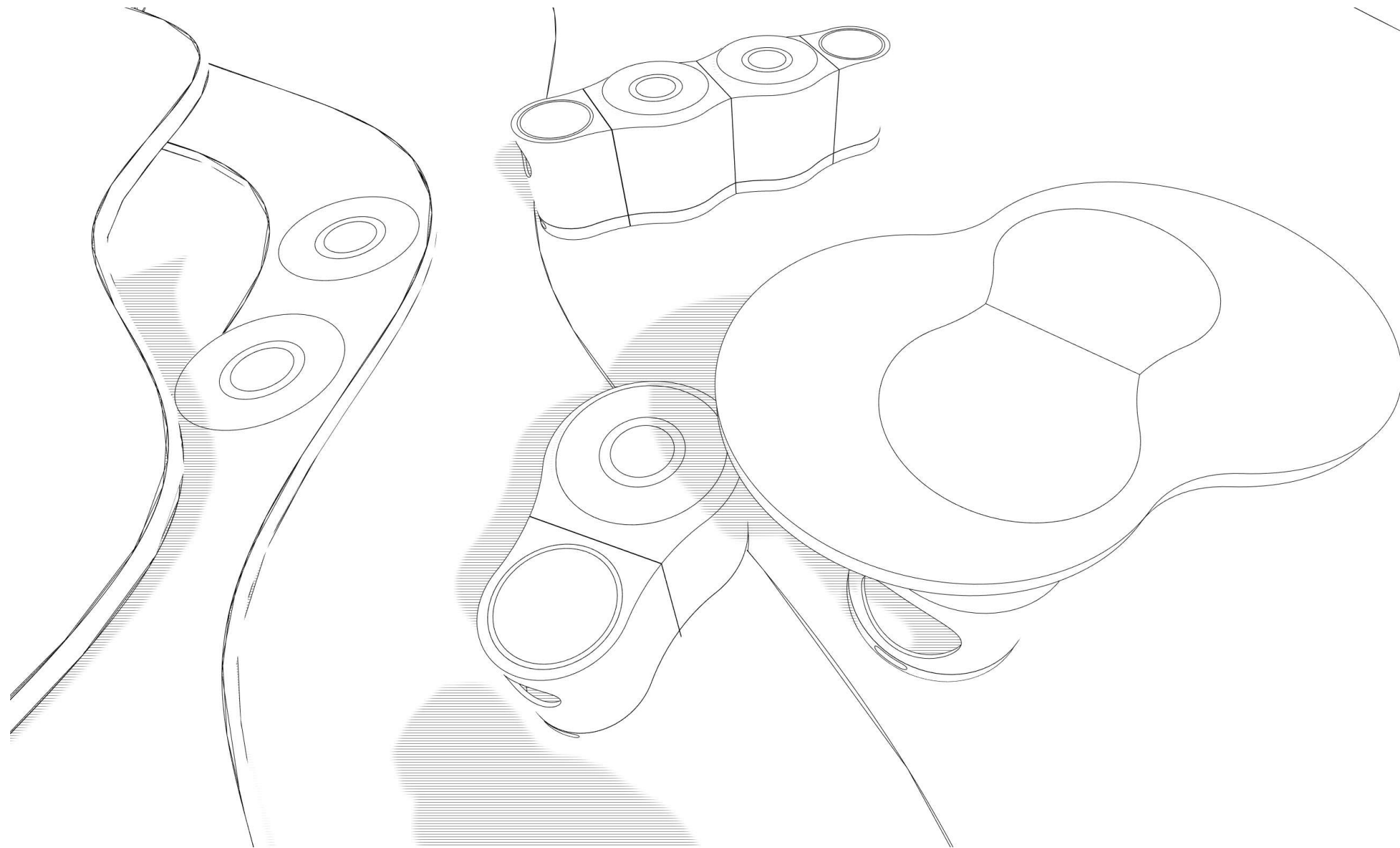
<https://www.patrick-teuffel.eu/?lang=en>

<https://www.boll-und-partner.de/>

Additional Partners are available if required.

PLASMIC ARCHITECTURE ° DESIGN °

Contact



Tracy Krüger
Rosenbergplatz 2
D-70193 Stuttgart
t.krueger@plasmic.de
+49(0)170 160 9492

Additional Partners are available if required.

plasmic ARCHITECTURE ° DESIGN °